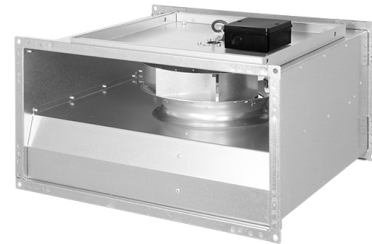
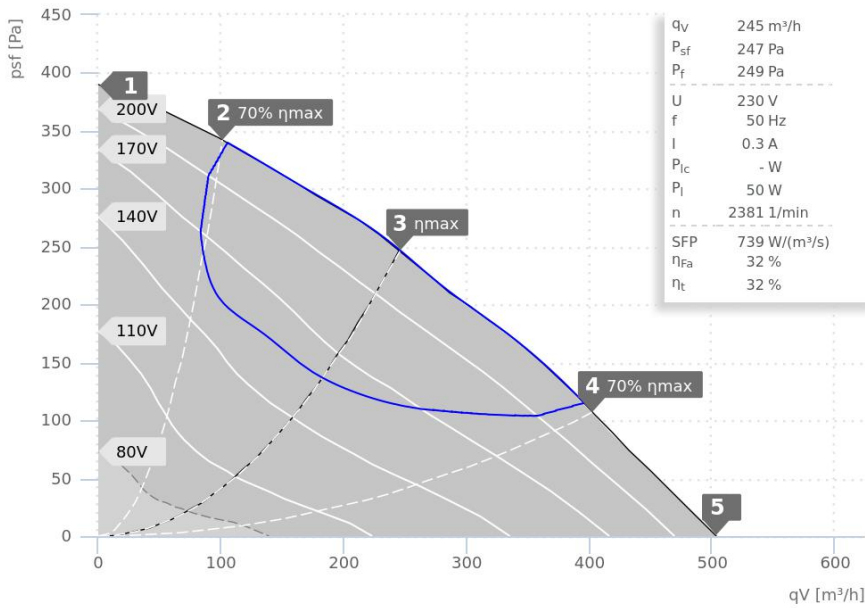


# DATA SHEET

## KVR 3015 E2 40 | 135000



- Backward curved centrifugal fan
- Galvanized metal housing
- Speed controllable
- Integrated thermostatic switch
- Fan section removable

— ErP compliant range

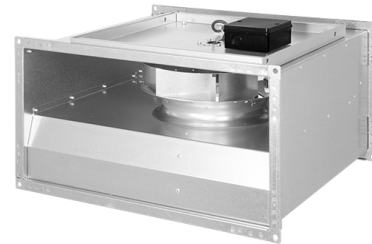
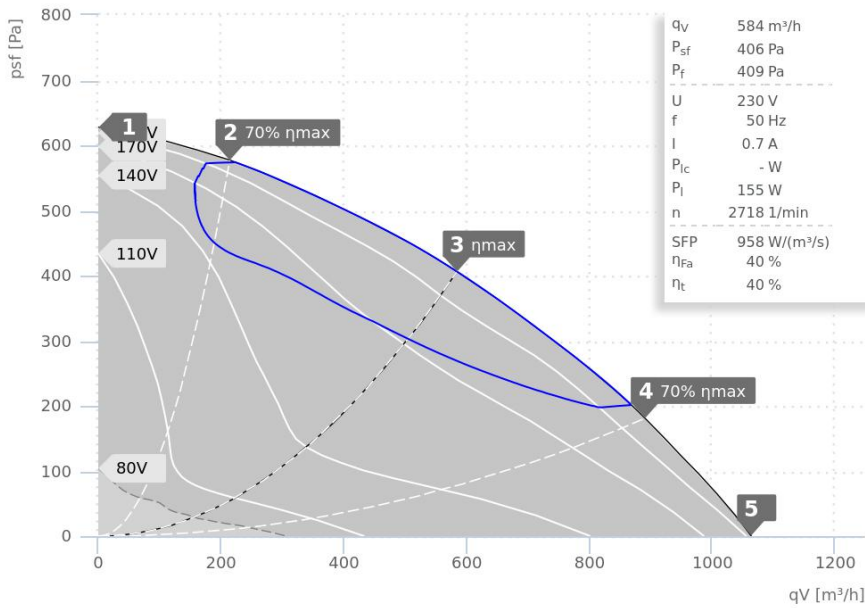
Operating Point		1	2	3	4	5
Current $I$	A	0,3	0,3	0,3	0,3	0,3
Power consumption $P_1$	W	36	43	50	50	47
Rotation speed $n$	1/min	2703	2570	2382	2406	2468
SWL inlet $L_{WA5}$	dB(A)	66	66	65	67	72
SWL outlet $L_{WA6}$	dB(A)	69	68	68	71	74
SWL casing break out $L_{WA2}$	dB(A)	56	55	54	55	58

Sound power ( $L_W$ ) dB(A)		Medium Frequency Band								
		$\Sigma$	63	125	250	500	1k	2k	4k	8k
Inlet	$L_{WA5}$	65	30	44	59	56	57	58	56	48
Outlet	$L_{WA6}$	68	27	40	60	60	62	62	59	50
Housing radiation	$L_{WA2}$	54	27	42	50	49	42	41	37	28

KVR 3015 E2 40   135000	
Voltage $U_N$	230 V 1~
Current $I_{max}$	0,3 A
Ambient temperature $t_A$	70 °C
Conveyed medium temperature $t_M$	70 °C
Speed Control	V
Motor protection	TMI
Insulation class motor	F
Weight	6,1 kg
Number of poles	2
IP motor	IP33
IP terminal box	IP44
IP complete unit	IPX4
Min. operating temperature	-25 °C

# DATA SHEET

KVR 4020 E2 30 | 145647



- Backward curved centrifugal fan
- Galvanized metal housing
- Speed controllable
- Integrated thermostatic switch
- Fan section removable

— ErP compliant range

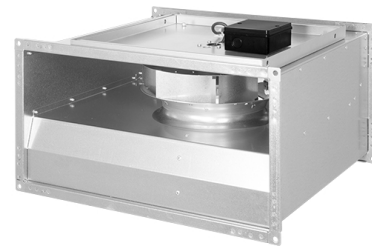
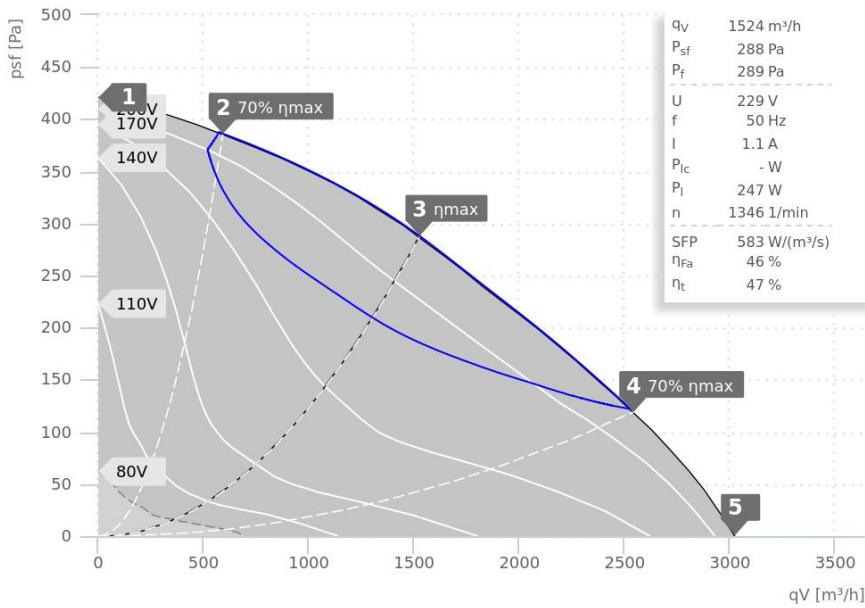
Operating Point		1	2	3	4	5
Current $I$	A	0,4	0,5	0,7	0,7	0,6
Power consumption $P_1$	W	91	116	155	150	134
Rotation speed $n$	1/min	2889	2826	2718	2744	2787
SWL inlet $L_{WA5}$	dB(A)	76	76	77	83	83
SWL outlet $L_{WA6}$	dB(A)	79	79	78	83	85
SWL casing break out $L_{WA2}$	dB(A)	64	63	63	67	71

Sound power ( $L_W$ ) dB(A)		Medium Frequency Band								
		$\Sigma$	63	125	250	500	1k	2k	4k	8k
Inlet	$L_{WA5}$	77	40	59	74	65	68	66	66	60
Outlet	$L_{WA6}$	78	39	61	70	72	72	72	69	63
Housing radiation	$L_{WA2}$	63	41	48	60	58	50	47	47	44

KVR 4020 E2 30   145647	
Voltage $U_N$	230 V 1~
Current $I_{max}$	0,9 A
Ambient temperature $t_A$	45 °C
Conveyed medium temperature $t_M$	45 °C
Speed Control	V
Motor protection	TMI
Insulation class motor	F
Weight	9,8 kg
Number of poles	2
IP motor	IP33
IP terminal box	IP44
IP complete unit	IPX4
Min. operating temperature	-25 °C

# DATA SHEET

## KVR 6035 E4 30 | 131309



- Backward curved centrifugal fan
- Galvanized metal housing
- Speed controllable
- Integrated thermostatic switch
- Fan section removable

— ErP compliant range

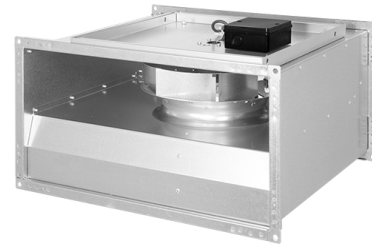
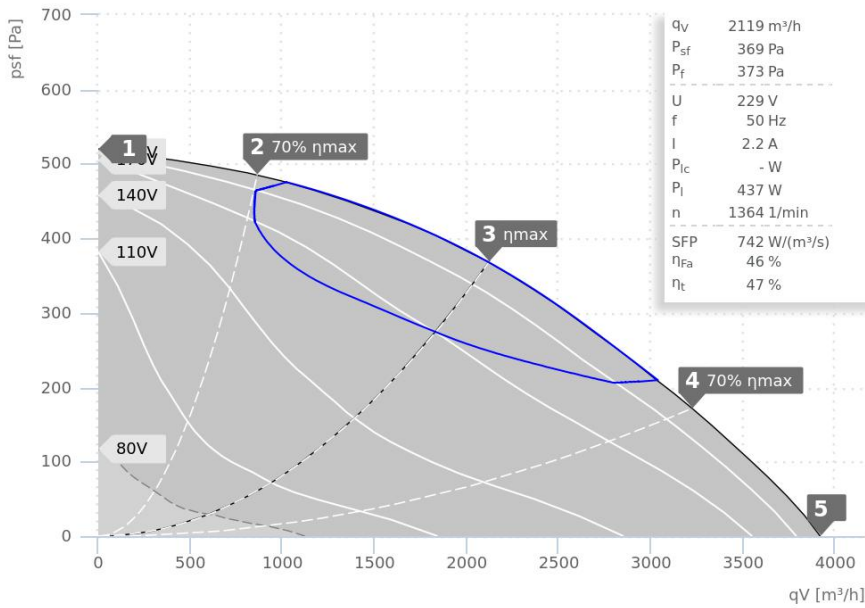
Operating Point		1	2	3	4	5
Current I	A	0,7	0,9	1,1	1,1	0,9
Power consumption P <sub>i</sub>	W	134	187	247	240	202
Rotation speed n	1/min	1453	1410	1348	1364	1401
SWL inlet L <sub>WA5</sub>	dB(A)	67	65	69	74	76
SWL outlet L <sub>WA6</sub>	dB(A)	71	69	71	78	81
SWL casing break out L <sub>WA2</sub>	dB(A)	63	61	61	67	69

Sound power (L <sub>W</sub> ) dB(A)		Medium Frequency Band								
		Σ	63	125	250	500	1k	2k	4k	8k
Inlet	L <sub>WA5</sub>	69	38	68	59	57	57	54	49	41
Outlet	L <sub>WA6</sub>	71	40	68	62	63	63	57	51	43
Housing radiation	L <sub>WA2</sub>	61	39	59	53	52	49	46	43	38

KVR 6035 E4 30   131309	
Voltage U <sub>N</sub>	230 V 1~
Current I <sub>max</sub>	1,4 A
Ambient temperature t <sub>A</sub>	40 °C
Conveyed medium temperature t <sub>M</sub>	40 °C
Speed Control	V
Motor protection	TAI
Insulation class motor	F
Weight	24,0 kg
Number of poles	4
IP motor	IP44
IP terminal box	IP44
IP complete unit	IPX4
Min. operating temperature	-25 °C

# DATA SHEET

## KVR 6035 E4 31 | 131312



- Backward curved centrifugal fan
- Galvanized metal housing
- Speed controllable
- Integrated thermostatic switch
- Fan section removable

— ErP compliant range

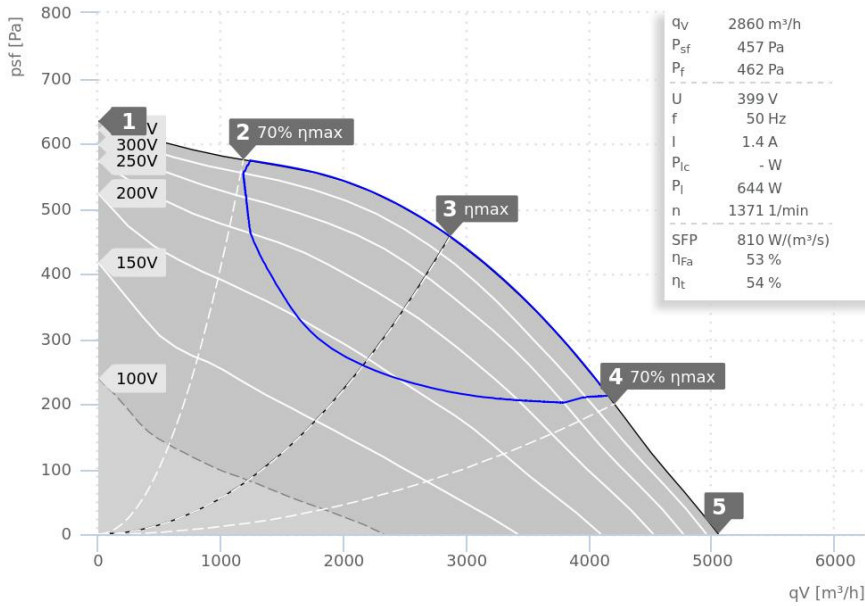
Operating Point		1	2	3	4	5
Current I	A	1,6	1,8	2,2	2,2	2,0
Power consumption P <sub>i</sub>	W	248	341	438	442	389
Rotation speed n	1/min	1448	1411	1367	1369	1393
SWL inlet L <sub>WA5</sub>	dB(A)	72	71	72	79	81
SWL outlet L <sub>WA6</sub>	dB(A)	78	77	80	84	87
SWL casing break out L <sub>WA2</sub>	dB(A)	70	69	69	72	74

Sound power (L <sub>W</sub> ) dB(A)		Medium Frequency Band								
		Σ	63	125	250	500	1k	2k	4k	8k
Inlet	L <sub>WA5</sub>	72	41	70	62	62	62	60	59	50
Outlet	L <sub>WA6</sub>	80	45	78	68	70	70	65	62	53
Housing radiation	L <sub>WA2</sub>	69	50	66	60	58	57	59	57	49

KVR 6035 E4 31   131312	
Voltage U <sub>N</sub>	230 V 1~
Current I <sub>max</sub>	3,1 A
Ambient temperature t <sub>A</sub>	65 °C
Conveyed medium temperature t <sub>M</sub>	65 °C
Speed Control	V
Motor protection	TAO
Insulation class motor	F
Weight	28,1 kg
Number of poles	4
IP motor	IP54
IP terminal box	IP44
IP complete unit	IPX4
Min. operating temperature	-25 °C

# DATA SHEET

## KVR 7040 D4 30 | 131316



- Backward curved centrifugal fan
- Galvanized metal housing
- Speed controllable
- Integrated thermostatic switch
- Fan section removable

— ErP compliant range

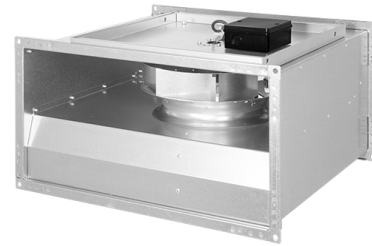
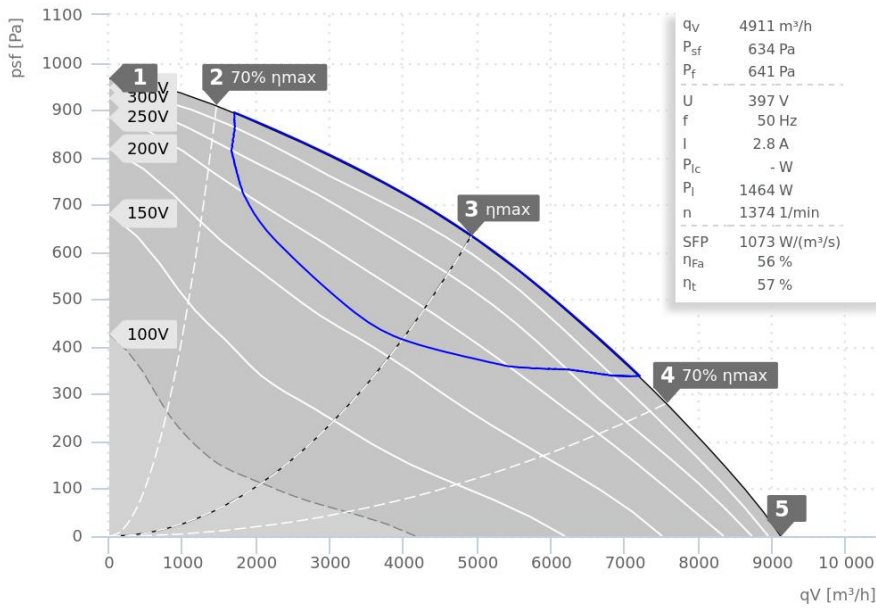
Operating Point		1	2	3	4	5
Current I	A	1,0	1,2	1,4	1,3	1,2
Power consumption P <sub>1</sub>	W	296	491	645	587	508
Rotation speed n	1/min	1445	1404	1371	1388	1404
SWL inlet L <sub>WA5</sub>	dB(A)	77	76	77	80	83
SWL outlet L <sub>WA6</sub>	dB(A)	83	83	82	85	89
SWL casing break out L <sub>WA2</sub>	dB(A)	68	68	66	70	73

Sound power (L <sub>W</sub> ) dB(A)		Medium Frequency Band								
		Σ	63	125	250	500	1k	2k	4k	8k
Inlet	L <sub>WA5</sub>	77	45	70	65	71	70	69	64	57
Outlet	L <sub>WA6</sub>	82	46	74	71	75	77	74	68	60
Housing radiation	L <sub>WA2</sub>	66	46	63	56	57	58	54	47	40

KVR 7040 D4 30   131316	
Voltage U <sub>N</sub>	400 V 3~
Current I <sub>max</sub>	1,5 A
Ambient temperature t <sub>A</sub>	60 °C
Conveyed medium temperature t <sub>M</sub>	60 °C
Speed Control	V
Motor protection	TAO
Insulation class motor	F
Weight	37,5 kg
Number of poles	4
IP motor	IP54
IP terminal box	IP44
IP complete unit	IPX4
Min. operating temperature	-30 °C

# DATA SHEET

## KVR 8050 D4 30 | 131320



- Backward curved centrifugal fan
- Galvanized metal housing
- Speed controllable
- Integrated thermostatic switch
- Fan section removable

— ErP compliant range

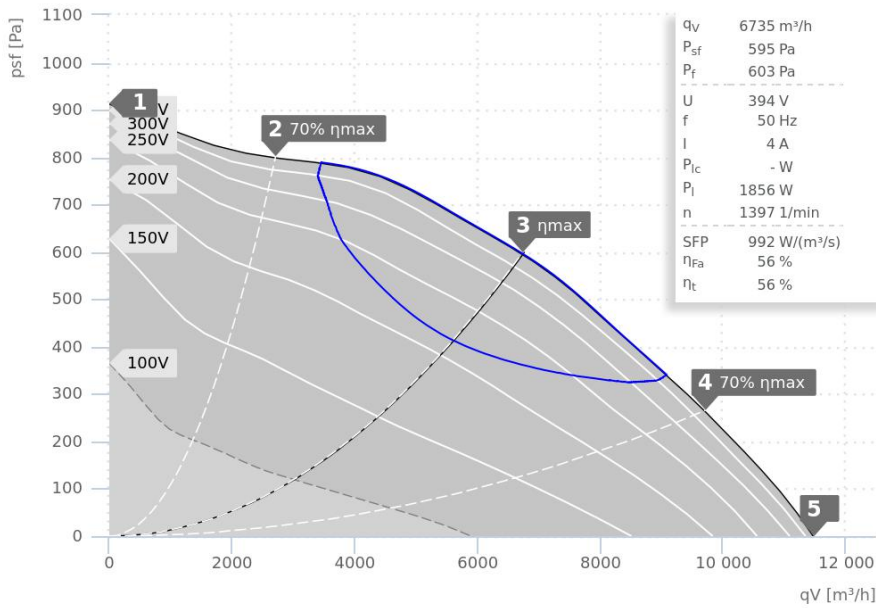
Operating Point		1	2	3	4	5
Current I	A	1,8	2,1	2,8	2,8	2,5
Power consumption P <sub>l</sub>	W	573	883	1469	1415	1170
Rotation speed n	1/min	1456	1428	1376	1386	1405
SWL inlet L <sub>WA5</sub>	dB(A)	78	77	78	83	86
SWL outlet L <sub>WA6</sub>	dB(A)	84	83	84	89	94
SWL casing break out L <sub>WA2</sub>	dB(A)	71	69	68	72	75

Sound power (L <sub>W</sub> ) dB(A)		Medium Frequency Band								
		Σ	63	125	250	500	1k	2k	4k	8k
Inlet	L <sub>WA5</sub>	78	51	74	68	70	70	68	65	60
Outlet	L <sub>WA6</sub>	84	51	74	77	79	78	74	69	64
Housing radiation	L <sub>WA2</sub>	68	49	66	60	59	59	53	49	44

KVR 8050 D4 30   131320	
Voltage U <sub>N</sub>	400 V 3~
Current I <sub>max</sub>	3,5 A
Ambient temperature t <sub>A</sub>	55 °C
Conveyed medium temperature t <sub>M</sub>	55 °C
Speed Control	V
Motor protection	TAE
Insulation class motor	F
Weight	59,9 kg
Number of poles	4
IP motor	IP54
IP terminal box	IP44
IP complete unit	IPX4
Min. operating temperature	-30 °C

# DATA SHEET

## KVR 10050 D4 30 | 131325



- Backward curved centrifugal fan
- Galvanized metal housing
- Speed controllable
- Integrated thermostatic switch
- Fan section removable

— ErP compliant range

Operating Point		1	2	3	4	5
Current I	A	2,8	3,5	4,0	3,8	3,5
Power consumption P <sub>i</sub>	W	895	1463	1866	1687	1397
Rotation speed n	1/min	1448	1423	1401	1416	1430
SWL inlet L <sub>WA5</sub>	dB(A)	81	82	84	87	90
SWL outlet L <sub>WA6</sub>	dB(A)	86	87	88	92	94
SWL casing break out L <sub>WA2</sub>	dB(A)	72	73	72	75	77

Sound power (L <sub>W</sub> ) dB(A)		Medium Frequency Band								
		Σ	63	125	250	500	1k	2k	4k	8k
Inlet	L <sub>WA5</sub>	84	54	80	74	78	75	72	71	65
Outlet	L <sub>WA6</sub>	88	53	81	80	81	81	77	73	66
Housing radiation	L <sub>WA2</sub>	-	-	-	-	-	-	-	-	-

KVR 10050 D4 30   131325	
Voltage U <sub>N</sub>	400 V 3~
Current I <sub>max</sub>	4,7 A
Ambient temperature t <sub>A</sub>	60 °C
Conveyed medium temperature t <sub>M</sub>	60 °C
Speed Control	V
Motor protection	TAE
Insulation class motor	F
Weight	71,0 kg
Number of poles	4
IP motor	IP54
IP terminal box	IP44
IP complete unit	IPX4
Min. operating temperature	-30 °C