

FTA

Air conditioning units.
Air flow rates from 900 to 5.000 m³/h.

The air conditioning units of the FTA series are designed for domestic, commercial and hotel installations, for applications of small and medium dimensions.

Available both in vertical and horizontal version, the frame is made from a double galvanised steel wall with polyurethane insulation, in order to grant an elevate thermal insulation and extremely low noise level.

The FTA units are characterised by compact design (mandatory requirement for concealed ceiling installations), low noise level and high available pressure.

The wide range of accessories (such as bag filters and 3-ways mixing bos) makes these units suitable for all applications.



> Versions

8 available sizes.

Configuration **horizontal (H)** or **vertical (V)**.

Version 3: with 3-rows water coil.

Version 4: with 4-rows water coil.

Version 6: with 6-rows water coil.

Version with **3-rows direct expansion coil** for R407C or R410A.

Version with **4-rows direct expansion coil** for R407C or R410A.

Version X: air extract unit only.

> Accessories

- M2S** 2-ways mixing box
- M3S** 3-ways mixing box
- FTF** section with soft bag filters
- B1R** 1R water re-heating coil
- B2R** 2R water re-heating coil
- PBE** plenum with 2-stages electric battery
- SSL** silencers
- S2Z** 2-zones damper (70-30 %)
- VRF** return fan section with filter
- PMM** plenum box with multiple circular spigots
- PMC** completely closed supply plenum box
- SAP** return air damper
- GMD** supply grille with adjustable fins
- GAP** intake grille
- FPI** G4 filters for bottom intake
- RG** control kit with complete control board

nuevo
new neu <<<
nuovo



>Main technical data

FTA Model		09	11	15	19	24	33	40	50
Nominal air flow rate	m ³ /h	900	1.100	1.500	1.900	2.400	3.300	4.000	5.000
Maximum available pressure ¹	Pa	140	320	270	250	185	250	245	200
3R coil total cooling capacity ²	kW	4,5	5,1	8,7	10,9	14,9	18,6	23,9	27,9
3R coil sensible cooling capacity ²	kW	3,5	4,0	6,3	8,0	10,6	13,5	17,2	20,3
3R coil heating capacity ³	kW	12,7	14,6	22,1	24,0	38,5	49,1	63,2	74,9
4R coil total cooling capacity ²	kW	4,7	5,7	9,8	13,3	17,9	22,4	28,8	34,1
4R coil sensible cooling capacity ²	kW	3,8	4,5	7,1	9,3	12,4	15,8	20,0	23,9
4R coil heating capacity ³	kW	15,0	17,6	25,6	33,0	43,2	56,2	70,3	84,4
6R coil total cooling capacity ²	kW	6,4	7,6	12,0	15,4	20,4	26,6	33,1	39,9
6R coil sensible cooling capacity ²	kW	4,6	5,5	8,2	10,6	13,8	18,2	22,6	27,3
6R coil heating capacity ³	kW	17,3	20,6	28,9	36,8	47,2	62,8	77,8	94,9
DX coil total cooling capacity ⁴	kW	6,5	7,2	10,9	14,1	19,1	23,0	30,2	34,2
DX coil sensible cooling capacity ⁴	kW	4,6	5,2	7,6	9,9	13,1	16,3	21,1	24,2
Re-heating coil heating capacity ⁵	kW	7,7	8,8	12,8	16,3	22,3	27,2	35,2	40,4
Max. total absorbed power	W	355	710	710	940	900	1880	1880	2050
Max. total absorbed current	A	1,6	3,1	3,1	4,1	3,9	8,2	8,2	9,0
Power supply	V-Ph-Hz	230/1/50							

- 1 At the nominal air flow with filter and 3-rows heat exchanger.
- 2 Capacities referred to: aria inlet 27°C, 47% RH; water temperature 7-12°C.
- 3 Capacities referred to: aria inlet 10°C; water temperature 70-60°C.
- 4 Capacities referred to: 4R coil; R410A; evap. temp 5°C; ari inlet 27°C, 47% RH.
- 5 Capacities referred to: 2R coil; re-heating coil air inlet 15°C; water temp. 70-60°C.

>Compatibility of accessories

	09	11	15	19	24	33	40	50
M2S	M2S1	M2S1	M2S2	M2S3	M2S4	M2S4	M2S5	M2S5
M3S	M3S1	M3S1	M3S2	M3S3	M3S4	M3S4	M3S5	M3S5
FTF	FTF1	FTF1	FTF2	FTF3	FTF4	FTF4	FTF5	FTF5
B1R	B1R1	B1R1	B1R2	B1R3	B1R4	B1R4	B1R5	B1R5
B2R	B2R1	B2R1	B2R2	B2R3	B2R4	B2R4	B2R5	B2R5
PBE (power supply 400/3+N/50)	PBE1	PBE2	PBE3	PBE4	PBE5	PBE6	PBE7	PBE8
SSL	SSL1	SSL1	SSL2	SSL3	SSL4	SSL4	SSL5	SSL5
S2Z	S2Z1	S2Z1	S2Z2	S2Z3	S2Z4	S2Z4	S2Z5	S2Z5
VRF	VRF1	VRF2	VRF3	VRF4	VRF5	VRF6	VRF7	VRF8
PMM	PMM1	PMM1	PMM2	PMM3	PMM4	PMM4	PMM5	PMM5
PMC	PMC1	PMC1	PMC2	PMC3	PMC4	PMC4	PMC5	PMC5
SAP	SAP1	SAP1	SAP2	SAP3	SAP4	SAP4	SAP5	SAP5
GMD	GMD1	GMD1	GMD2	GMD3	GMD4	GMD4	GMD5	GMD5
GAP	GAP1	GAP1	GAP2	GAP3	GAP4	GAP4	GAP5	GAP5
FPI	FPI1	FPI1	FPI2	FPI3	FPI4	FPI4	FPI5	FPI5
RG	RG							

>Characteristics

Structure made from 15mm thick sandwich panels with injected polyurethane (density 40 kg/m³). The suction panel is equipped with a flange to connect to air ducts (if present). The horizontal or vertical installation on the wall is made easy by appropriate fixing brackets.

Air filtration performed by G4 class filters, according to EN779 (50mm thickness), as standard, placed in the intake of the unit.

Centrifugal fans with double intake, forward-curved blades, with directly-coupled motors. The single phase, 230V-50Hz asynchronous motor, has several speeds, among which three may be selected with the control panel.

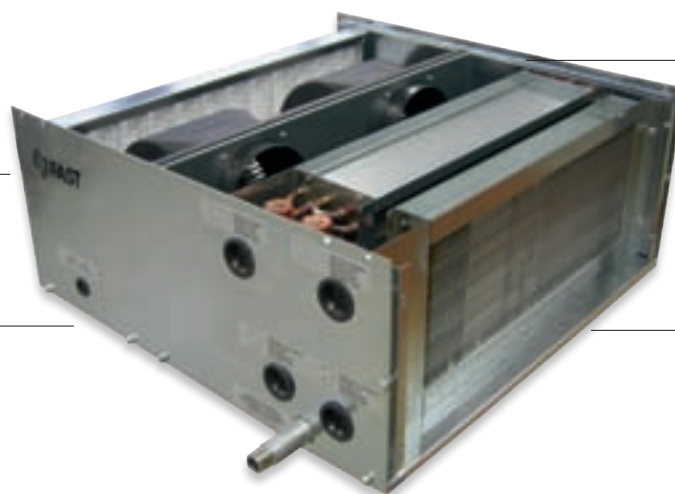
Condensate drain pan in alluminium alloy, internal, insulated.

Heat exchangers with 3, 4, 6 rows, for hot or cold water, made from copper pipes and aluminium fins, blocked by mechanical

expansion of the pipes. They are equipped with threaded sleeves for the hydraulic connections and the air relief valves. It is possible to rotate the coils on site. Direct expansion coils with 3 or 4 rows are also available, with refrigerant R407C or R410A, and re-heating coils with 1 or 2 rows with copper pipes and aluminium fins, blocked by mechanical expansion of the pipes.

The sandwich panels grant and excellent thermo-acoustic insulation.

Reduced height for typical concealed ceiling installations.



Standard intake filters class G4 according to EN779 (50 mm thickness).

Fan-motor assemblies capable of granting high available pressures.

nuevo
new neu <<<
nuovo



>Dimensions and weights

FTA H Model (horizontal)			09	11	15	19	24	33	40	50
Length	L	mm	700	700	700	850	850	1.000	1.000	1.000
Width	W	mm	700	700	1.050	1.050	1.475	1.475	2.100	2.100
Height	H	mm	300	300	300	390	390	390	390	390
Weight (3R water coil version)		kg	30	35	75	95	115	130	210	220

