



## Company presentation



## Main activities

- Manufacturing and installation of heating, ventilation and air-conditioning devices

## Tradition and quality

- over 50 years of success
- over 5000 sites fully equipped
- over 15000 large devices produced
- 2 modern production halls
- highly trained and specialized employees – engineers and experts from diverse areas of expertise

## Ownership

- 100% WOLF GmbH, Mainburg, Germany



- 1967** Company founded as a trade
- 1993** Registered as a Limited Liability Company
- 2002** First certification - ISO9001:2001 Quality management system
- 2004** Introduced AirCalc++ -AHU design and calculation software
- 2005** TÜV certification - DIN 1946-4, VDI 6022, EN 13053
- 2006** Headquarters and production moved to Gradna, Samobor
- 2008** CE Declaration of Conformity  
New automatic system for powder coating
- 2010** New generation products ProkCOOL, ProkFULL and ProkPAKT developed

- 2011** First EUROVENT certification
- 2013** ÖNORM 6020 certification  
CE for control cabinets
- 2015** PRO-KLIMA becomes part of WOLF Group
- 2015** ErP legal guidelines (2016 / 2018) - EU regulation 1253/2014 introduced
- 2016** Installed the fully automated Salvagnini S4+P4 production line for sheet metal storage, punching, cutting and bending
- 2018** Introduction of LEAN production
- 2019** New production hall and headquarters in Samobor
- 2020** KG Flex



*Customized services, flexibility  
and proactivity to meet any  
customer need*

*Educated, skilled, dedicated and  
solution oriented personnel capable of  
perceiving any complexity*



*Competitive price for  
unlimited possibilities and  
tailor-made solutions*

*Continuous knowledge and  
technology improvement*

*One-stop-shop concept – full project  
support, consulting and equipping,  
service and maintenance*

*Global company with a hands-on,  
detailed high quality approach*

PEOPLE

PROCESSES

TECHNOLOGY

CUSTOMERS

- Certified quality management system
- Certified technology
- Certified supplier
- Many more individual recognitions



**ISO 9001:2015**  
Quality Management System



**EUROVENT**



**EC**  
CE conformity



**ÖNORM H 6020**  
Hygienic design



**TÜV**  
DIN-1946-4, VDI 6022,  
EN 13053

- Comfort climate - villas, malls, offices, hotels, sports halls
- Swimming pools and recreational halls
- Hospitals and rehabilitation centers
- Pharmaceutical and research centers
- Paper industry
- Food industry
- Data centers
- Energy plants
- Shipyards, ships, tankers and platforms
- Automotive industry



Knapsack, Germany



Infineon Villach, Austria



**KG Flex Pool**  
3000 – 35 000 m<sup>3</sup>/h



**Individual – KG Flex**  
800 – 350 000 m<sup>3</sup>/h



**Modular – KF Top**  
Up to 19 500 m<sup>3</sup>/h



**Compact POOL**  
1400 – 3200 m<sup>3</sup>/h



**CFL**  
Up to 3 200 m<sup>3</sup>/h



**CKL evo**  
Up to 6 100 m<sup>3</sup>/h

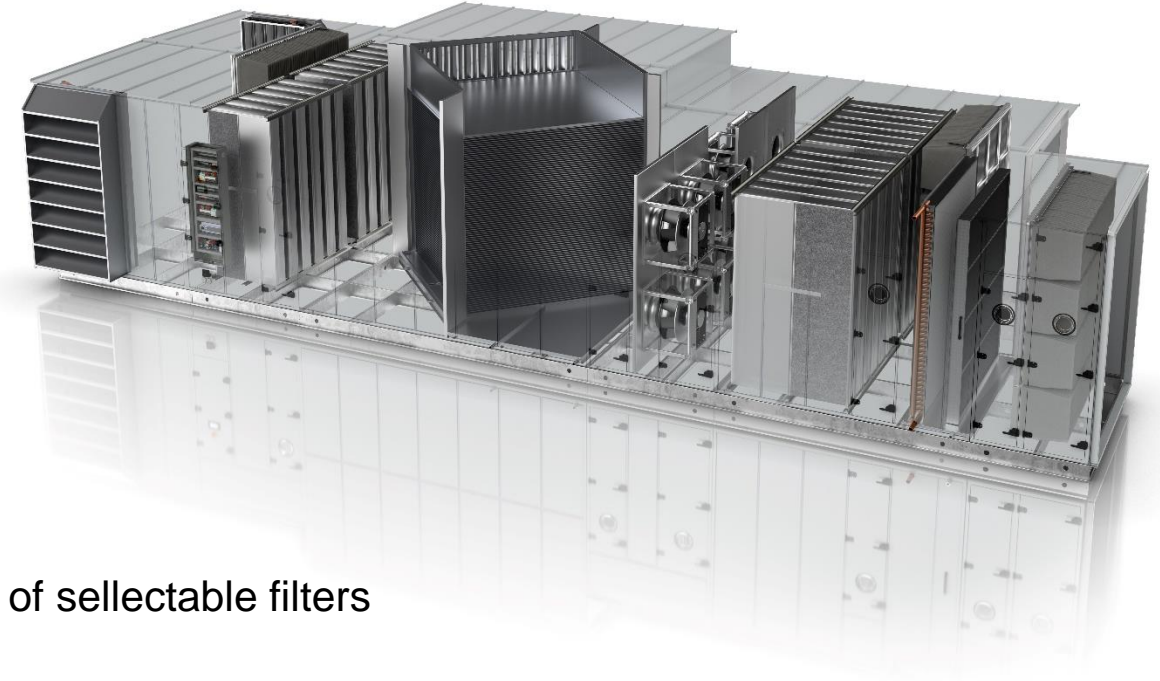


**CRL evo max**  
Up to 19 500 m<sup>3</sup>/h



### Type KG Flex and KG Flex max – individual line

- Custom solutions up to 350 000 m<sup>3</sup>/h
- Unlimited variety: flexible dimensions – project specific „tailor made units”
- Energy efficient and individually selectable recovery systems
- New casing design: T2;TB2, 60mm aluminium profiles
- Outstanding hygienic properties
- Flip&Clean silencers with easy to clean baffles
- Quick-release filter systems for easy maintenance, wide variety of selectable filters
- Executions: horizontal, vertical, side-by-side and stacked
- For indoor or outdoor installation
- Surface options: galvanized, prepainted, powder-coated, stainless steel
- Modern control system - external or integrated
- Widest variety of applications thanks to extreme casing and component adaptability



\*EUROVENT certified



### Type KG Top

- Flexible modular solutions up to 40 000 m<sup>3</sup>/h for indoor or outdoor usage
- Available versions: ATEX, stainless steel, hygienic
- Energy efficient and individually selectable recovery systems
- T2;TB2, 50mm non-combustible mineral wool insulation
- Wide variety of selectable filters, incl. pocket filters without ground contact for maximum hygiene
- Doors with glass fibre-reinforced handle and rotary closure with safety catch and/or twin lever closure, optionally lockable, with double track PU seal for optimal tightness and quiet operation
- Removable, smooth surface, thermally decoupled casing panels
- Airtight, externally mounted or integrated dampers as per DIN EN 1751, optional double lip, zinc-plated, powder-coated or stainless steel finish with gears outside the airflow
- Modern control system – individually matched and tested components



### Type KU-M / KEK-M

- Power range: 20 - 1050 kW
- Area of application: paint shops, workshops, greenhouses, warehouses, markets...
- Fully equipped with fans, control cabinet and available automation
- Burner for extra light oil or natural gas
- Advantages:
  - Without secondary media
  - Cost-effective installation
  - Quick heating
  - No need for additional machinery rooms



### Type CFL-EC Slimline

- Ideal for use in suspended ceilings
- Available in 4 different sizes up to 3 200 m<sup>3</sup>/h
- Flat compact design for easy integration and assembly
- Efficiency of over 90% using aluminum countercurrent plate heat exchangers
- Free-running impellers infinitely variable with EC technology
- Wide range of accessories available





### Type CKL evo

- Available as an indoor unit with vertical or horizontal duct connection (CKL-iV/iH evo) or as a weatherproof unit CKL-A evo
- 5 sizes up to 6 100 m<sup>3</sup>/h
- Double filter stage for maximum hygiene and numerous extension modules and accessories
- Night cooling (ventilation) with bypass mode as standard
- Heat recovery factors up to and exceeding 90% with plate heat exchangers



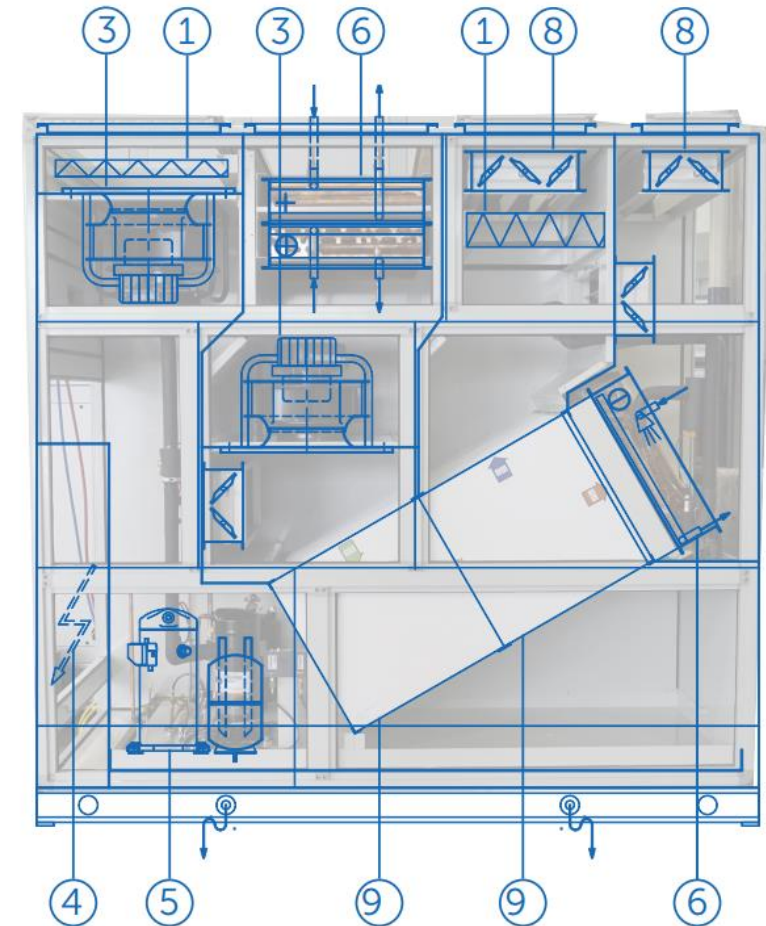
### Type CRL evo and CRL evo max

- Compact units with high performance rotary heat exchangers and various duct connection options
- Sizes up to 19 500 m<sup>3</sup>/h
- Wide range of rotor types: sorption, enthalpy, condensation
- Patented labyrinth seal with leakage rate of only 2%
- Easy installation of slimline units and units supporting disassembly
- Wide range of air duct routing options:
  - Indoor: Bottom horizontal\_top vertical (iD)  
Horizontal (iH)  
Bottom horizontal\_top vertical/horizontal (iHD)
  - Weatherproof: Horizontal (A)



### Type KG Flex CompactPool

- 2 sizes
- Air volume flow: **1300 - 3200** m<sup>3</sup>/h
- Dimensions: standardized
- Integrated heat pump for dehumidification (5,6)
- EC – Fans (3)
- Water heater (6) / Electric heater(optional)
- Heat recovery system with two polypropylene plate heat exchangers – up to 75% efficiency (9)
- Water condenser – optional
- Complete automatic control system (4)
- Integrated control cabinet (4)
- Designed in accordance with VDI 2089 /2010





### Type KG Flex Pool

- 18 sizes
- Air volume flow: **3000 – 35 000** m<sup>3</sup>/h
- Dimensions: standardized or project specific – „tailor made”
- EC fans
- Water heater / Electric heater
- Integrated heat pump – project specific
- For natural or thermal water
- Three different operation modes
- Heat recovery system with polypropylene plate heat exchangers
- Pool water condenser - optional
- Complete automatic control system with integrated control cabinet
- Designed in accordance with VDI 2089 /2010



### VDI 2089:

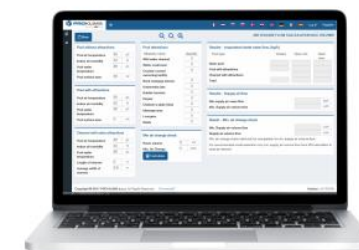
- The VDI guideline applies to heat, room air, sanitary and electrical systems in public indoor swimming pools.
- The guideline serves as a planning and decision-making basis for planners of technical installations and operators of indoor swimming pools.

### POOL AREA

- Problem - Humidity
- The highest evaporating water mass flow - the need for dehumidification [kg/h].
- Air volume for dehumidification

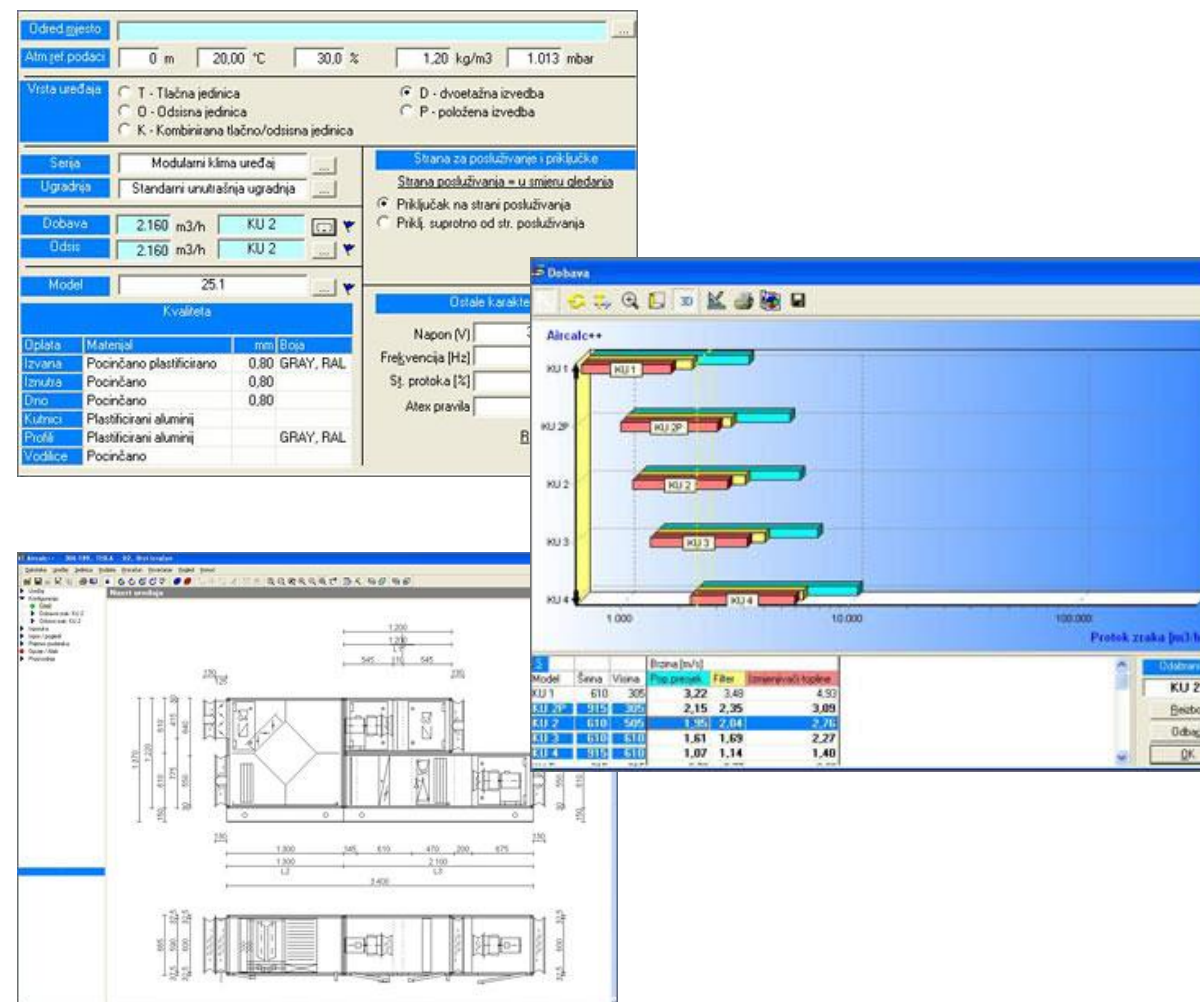
### WEB TOOL VDI 2089 - POOL UNIT

- Design, function and advantages
- Product selection, technical documentation
- ProkPOOL - Compact units
- KG Flex Pool - Modular pool units



The airCalc ++ computer software allows you to quickly and easily select the appropriate sizes, types and configurations of the unit you need, depending on the parameters and conditions required.

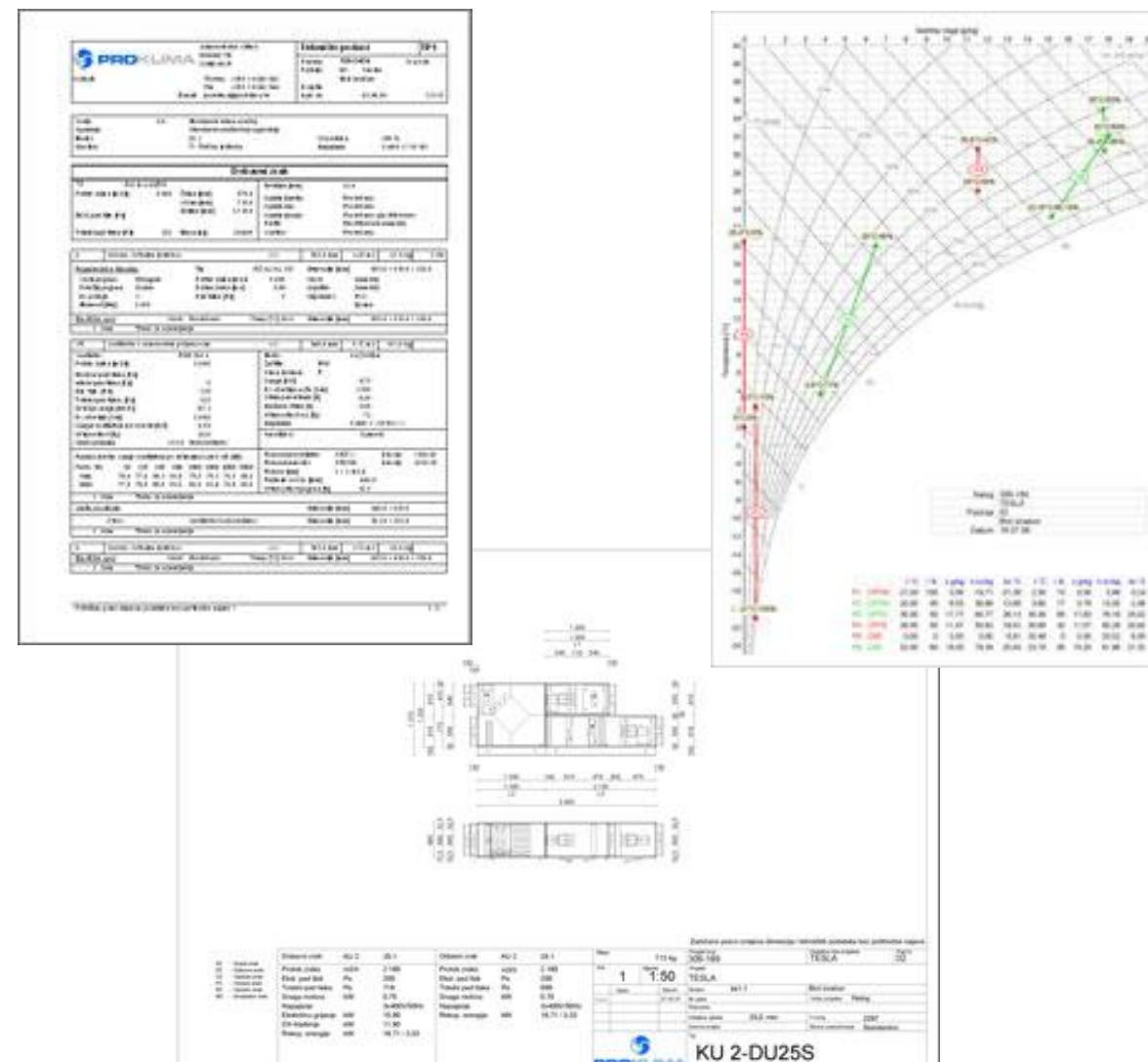
A large variety of options and dimensioning facilitates and accelerates the process of unit design and offers detailed technical information for the selected versions.





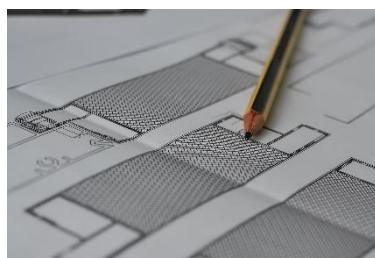
AirCalc++ software allows you to easily acquire:

- Technical data
- Device drawing with detailed dimensions
- Device description
- Sound calculation
- h-x diagram
- Fan characteristics with technical data





Individual solutions  
development



Planning support



Logistics



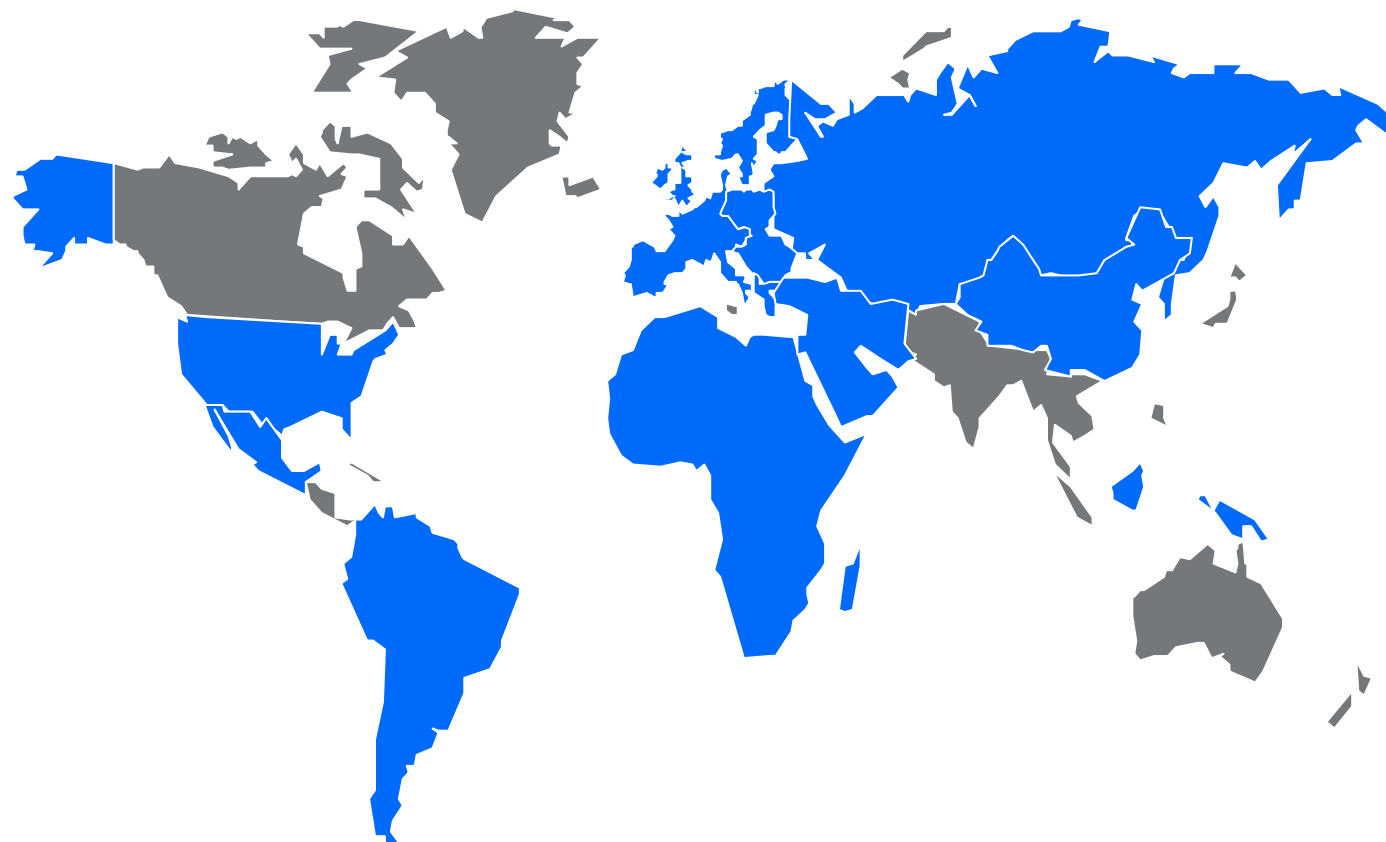
Commissioning



Maintenance, service  
and  
spare part delivery

### Countries:

- EU
- Serbia
- North Macedonia
- Montenegro
- Kosovo
- Russia
- United Arab Emirates
- South African Republic
- Switzerland
- Kazakhstan
- Malaysia
- United States
- Mexico
- Madagascar
- Ireland
- United Kingdom
- China
- ...



- PRO-KLIMA units worldwide



## Industrial:

- Porsche Zuffenhousen
- Magna Nucleus
- AUDI
- BMW Berlin
- BMW Leipzig
- Daimler SA
- VW Hannover
- VW Bratislava
- Sleipnir
- ...



## Hospitality:

- Radisson hotels
- Maistra Resorts
- Hotel Monte Mulini
- Hotel Rathaneum
- Alpenroyal Zermatt
- ...

## Business centers:

- Square +. Wien
- Daimler-Chrysler building
- VMD business towers
- Khan Shatyr
- ...

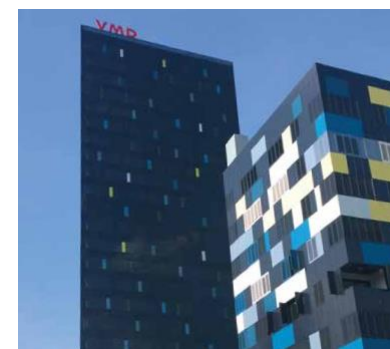


## Health industry:

- Pliva pharmaceuticals
- Belupo pharmaceuticals
- Novartis, St.Petersburg
- Vieco, UAE
- Gercena Institute, Moscow
- ...

## Data centers and technology:

- Ericsson NT
- GRQ
- Radiocenter Semei
- Infineon, Malaysia
- ...



# THANK YOU for your attention.



**PRO-KLIMA d.o.o.**

Gradna 78e  
10430 Samobor,  
Hrvatska

Tel: +385 1 6546-343  
Fax: +385 1 6546-344  
[www.proklima.hr](http://www.proklima.hr)  
[proklima@proklima.hr](mailto:proklima@proklima.hr)

*This presentation belongs to the author and is subject to copyright.  
Reprinting, duplicating, editing (including single extracts) and/or passing on  
the presentation to third parties constitutes an infringement of copyright.*

*Although this presentation was created with the greatest care, we cannot  
guarantee that all information is accurate, complete or up to date.*